

Applies To:

All Falcons manufactured prior to July 1, 1995

Items Provided By Wills Wing For This Retrofit:

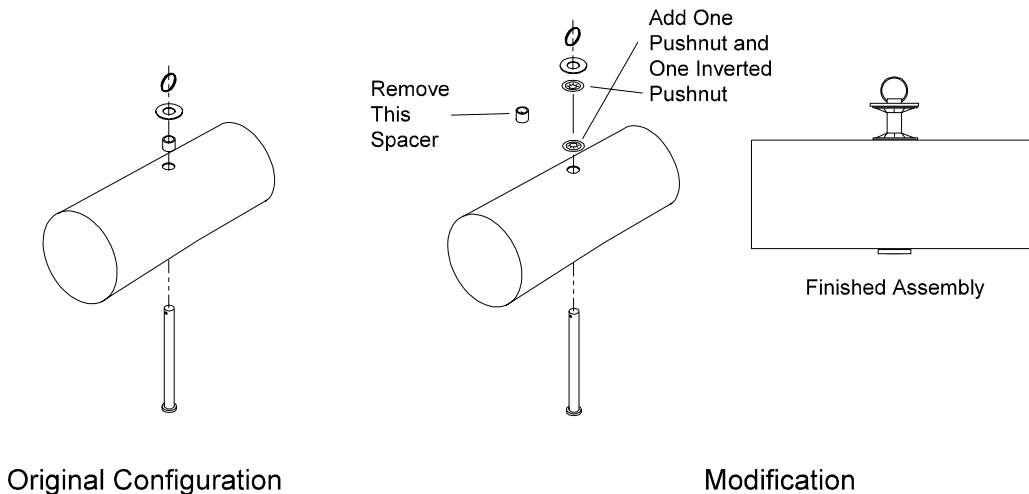
Quantity Four Part# 10N-1940 Pushnut 1/4 Inch

Tools Required For the Installation:

Short (2 to four inch) piece of 1/2" to 3/8" steel or aluminum tubing (scrap batten tubing OK)
Small hammer.

Background:

The ten millimeter batten tip which is used on Falcon #1 battens has too small a radius at the forked end to fit over the 3/8" diameter spacer onto which the batten end is intended to plug. (See diagram). As a result, the compression load on the batten may cause the batten tip to split. The radius of the batten tip fits correctly on the bare 1/4" clevis pin. In order to be able to plug the batten onto the bare clevis pin, the two push nuts indicated must be installed in place of the 3/8" diameter spacer. The first push nut holds the clevis pin in place in the tube with the end of the pin extending above the leading edge tube, and the second pushnut, which is installed upside down, holds the washer up at the top end of the clevis pin and tight against the safety ring, insuring that there is the proper open space of the clevis pin between the top of the leading edge and the under side of the washer.



Installation Procedure:

Dismount the sail at the rear leading edge and slide it forward to expose the number one batten stud.

Remove the small safety ring from the top of the #1 batten stud clevis pin. Remove the large washer and the 3/8" diameter spacer. Install the first pushnut in the normal direction (dome up) and use the small piece of tubing to push it all the way against the top of the leading edge tube while pushing the clevis pin all the way into the tube from the bottom.

With the head of the clevis pin supported from below against a hard surface, use the small piece of aluminum tubing and the small hammer to tap the second pushnut, in an inverted position (dome down) a short way onto the top of the clevis pin. Install the washer on top of the inverted pushnut, and re-install the small safety ring.

Use the claw of the hammer, or any forked tool, to pull the inverted push nut up tight against the washer, forcing it tight against the safety ring.

Re-install the sail at the rear leading edge.